

Shielding room 5 (Research & Development)

Description:

This shielded room is primarily used for research projects on high-voltage assemblies with correspondingly developed substitute loads for battery and motor, as well as their interference influence on high-speed communication systems in the vehicle, like 100Base-T1 (automotive Ethernet). The conducted interference emission of HV systems and the interference resistance of the communication systems are investigated, as well as the influence of the different coupling types.

Technical data:

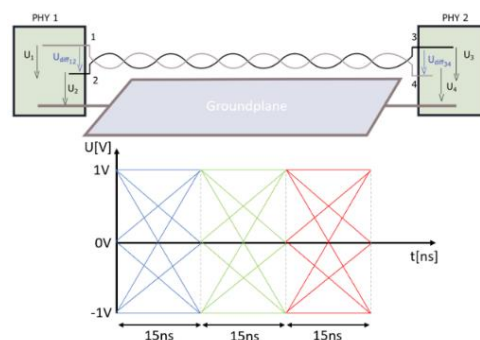
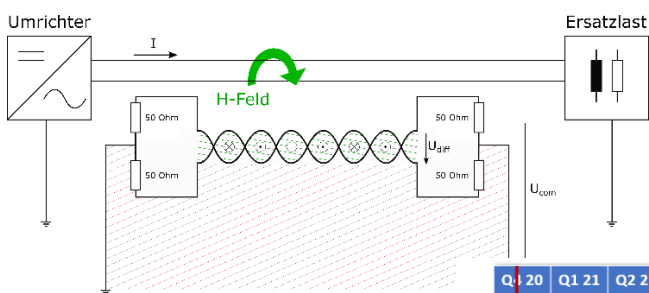
Frequency range from 10 Hz to 3 GHz

Oscilloscopes up to 20 GS/s and 2.5 GHz analogue bandwidth

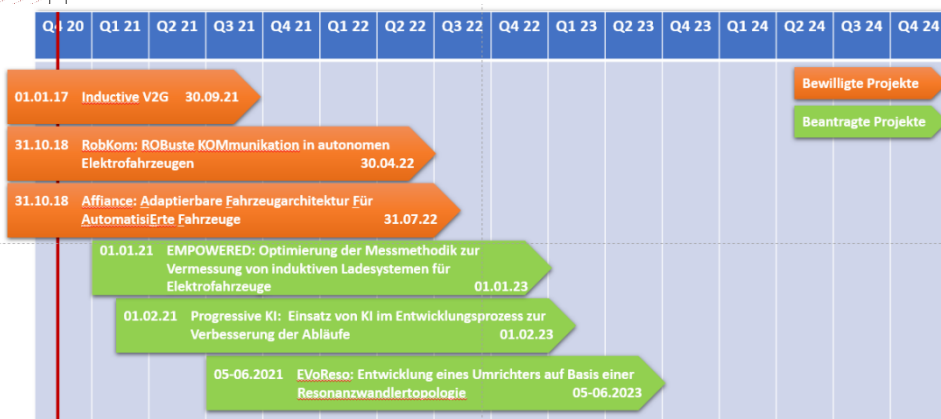
AC supply up to 32 A / 400 V

DC supply up to 40 kW

Water-cooling system



Research projects:



Issued: 01/2022

